

Niigata Wine

Note: Award-winning beverages are highlighted with a star (★) mark.

SPARKLING



Iwanohara *Zen* Sparkling
(White/Rosé)

¥ 4,200

Glass ¥ 1,200

- ABV: 12%
- Characteristic: Crisp and fruity
- Timing: Ideal for toast



HOUSE WHINE



Iwanohara "Miyukibana" Red

¥ 5,000

Glass ¥ 1,200

- ABV: 12%
- Characteristic: Mellow, medium-bodied
- Timing: Suited for beef



Iwanohara "Miyukibana" White

- ABV: 12%
- Characteristic: Dry and refreshing
- Timing: Great with seafood, chicken



Iwanohara "Rose Ciotter 2023" White ★

¥ 5,500

Glass ¥ 1,500

- ABV: 12%
- Characteristic: Fruity with subtle oak
- Timing: Great with seafood, chicken

RED



Iwanohara "Black Queen 2022" ★

¥ 6,800

- ABV: 12%
- Characteristic: Bold and spicy
- Timing: Perfect with meats



Iwanohara "Muscat Bailey A" ★

¥ 6,800

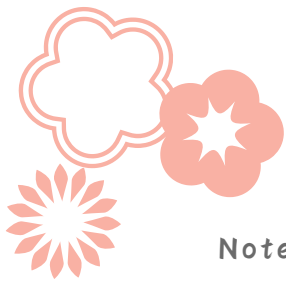
- ABV: 12%
- Characteristic: Soft, gentle fruit
- Timing: Great with any cuisine



Iwanohara "Heritage 2022" ★

¥ 9,500

- ABV: 12%
- Characteristic: Rich and concentrated
- Timing: For memorable occasions



DrinkMenu

Note: Award-winning beverages are highlighted with a star (★) mark.

DraftBeer

Fūmi Sōkai Nishite

(Local Niigata Draft Beer)

¥ 900

Sake

Naeba Shuzō "Yukinomayu" Junmai Ginjo ★

¥ 1,100/Glass

Kimi no I Yama-hai Junmai ★

¥ 1,200/Glass

Kimi no I Yama-hai Junmai Ginjo ★

¥ 1,500/Glass

Yoshinogawa "Sakagura no Awayuki" Sparkling Sake ★

¥ 1,300/Glass

whisky

Etsu no Shinobi Blended ★

¥ 1200

Etsu no Shinobi Pure Malt

¥ 1,500

Etsu no Shinobi Pure Malt 10 year

¥ 2,000

〈Neat / On the Rocks / WithWater / Highball〉

sour

Lemon

¥ 800

Plum

¥ 800

Gin

Nozawa Onsen Distillery "Nozawa Gin" ★

¥ 1,000

〈Neat / On the Rocks / Tonic / Soda〉

tequila

Sauza Tequila Silver

¥ 500

Soft Drink

Iced Green Tea

Hot Harbe Tea (Pot)

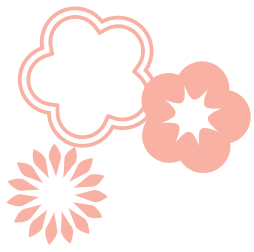
Hot Coffee

¥ 600

100% Pure Apple

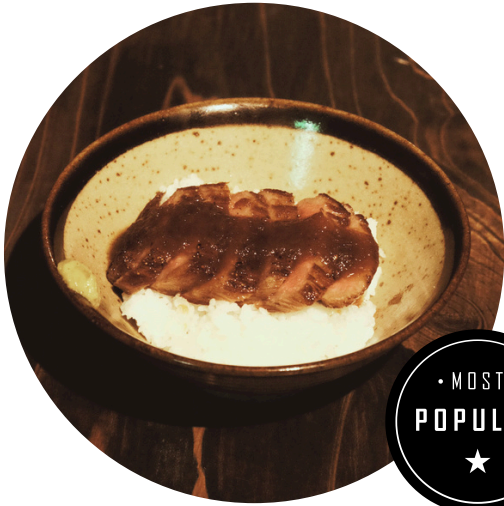
Coke With Lemon

GingerAle With Lime



Niigata Wagyu

In Japan, Winter is Wagyu Season.



• MOST •
POPULAR



Wagyu Steak Don over Rice

¥ 3,300



Wagyu Beef Steak Plate
(4 piece) ¥ 3,500



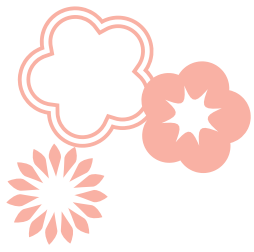
Wagyu Sukiyaki Hot Pot

¥ 3,200



Wagyu Beef Skewer(2 piece)

¥ 2,000



Food Menu



Bone-in Lamb Steak(1piece)
¥ 1,600



Chicken Nanban Don ¥ 2,000
(Crispy Marinated Chicken over Rice)



Duck Skewer ¥ 1,400



Assorted Sashimi ¥ 2,400

Edamame ¥ 600

French Fries ¥ 600

Rice ¥ 500



Waldorf salad ¥ 1,400

Today's chef recommended Dish ¥ 3,300

Deserts

Gateau chocolat ¥ 900

Cassis sorbet ¥ 600

Dried persimmon pound cake ¥ 900