

WineMenu

Note: Award-winning beverages are highlighted with a star () mark.

SPARKLING



Iwanohara*Zen*Sparkling
(White/Rosé)

¥ 4,200



Zen Sparkling (White & Rosé) features fruity aromas and crisp acidity, elevating many dishes. At 12% alcohol, they're balanced, versatile choices.

GLASS



Iwanohara "Miyukibana"
(Red/White)

¥ 1,000



Miyukibana Red is crafted from ripe Muscat Bailey A grapes, offering a medium-bodied wine with mellow depth at 12% alcohol. Miyukibana White, also 12%, uses natural clarification and low-temp fermentation for a dry, fresh, and aromatic profile that highlights the fruit's pure character.

RED



Iwanohara "Black Queen 2022"

¥ 8,800

A bold, full-bodied red with a complex bouquet of spices and dark fruits. At 12% alcohol, its concentrated depth captivates serious wine lovers.



Iwanohara "Muscat Bailey A"

¥ 8,800

A medium-bodied red from Muscat Bailey A's birthplace. At 12% alcohol, it's soft on the palate with gentle flavors, pairing easily with many dishes.



Iwanohara "Heritage 2022"

¥ 16,500

Heritage is our premium red wine from the year's finest grapes. At 12% alcohol, it offers rich, concentrated aromas and flavors with remarkable depth.

WHITE



Iwanohara "Rose Ciotter 2023"

Fruity aromas of pineapple, banana, and pear blend with soft oak scents. Mild acidity ensures a smooth, elegant taste. Crafted with a steam-based process.

¥ 4,950



DrinkMenu

Note: Award-winning beverages are highlighted with a star () mark.

DraftBeer

Fūmi Sōkai Nishite ¥ 850
(Local Niigata Draft Beer)

Sake

Naeba Shuzō "Yukinomayu" Junmai Ginjo ¥ 1,000/Glass

Kimi no I Yama-hai Junmai ¥ 900/Glass

Kimi no I Yama-hai Junmai Ginjo ¥ 1,200/Glass

Yoshinogawa "Sakagura no Awayuki" Sparkling Sake ¥ 1,300/Glass

whisky

Etsu no Shinobi Blended ¥ 1200

Etsu no Shinobi Pure Malt ¥ 1,500

〈Neat / On the Rocks / WithWater / Highball〉

sour

Lemon ¥ 800

Plum ¥ 800

Gin

Nozawa Onsen Distillery "Nozawa Gin" ¥ 1,000

〈Neat / On the Rocks / Tonic / Soda〉

tequila

Sauza Tequila Silver ¥ 500

Soft Drink

HarbeTea

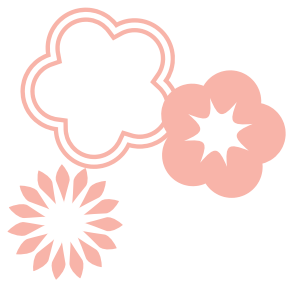
Apple

Orange

Peach ¥ 600

Coke

GingerAle



Foodmenu

In Japan, Winter is Wagyu Season.

Maine Including Rice

Wagyu Sukiyaki Hot Pot

※1

¥ 3,200



※1

Wagyu Steak Don (Steak over Rice)

※2

¥ 3,300



※2

Ikura Don (Salmon Roe over Rice)

※3

¥ 3,100



※3

Wagyu Beef Hamburger Steak

¥ 2,900

Chicken Nanban Don

(Crispy Marinated Chicken over Rice)

¥ 1,600

Today's chef recommended Meat Dish

¥ 2,600

Today's chef recommended Fish Dish

¥ 2,200

※4

Unadon (Grilled Eel over Rice)

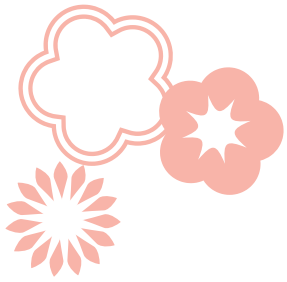
※4

¥ 3,000



THIS IS A PHOTO OF THE SET MENU.

〈Set Mini Carpaccio Salad & Soup〉 ¥ 600



Foodmenu

Side

Bone-in Lamb Steak(1piece)

¥ 1,100



※1

※1

Eel Kabayaki Skewer

¥ 1,500



※2

※2

Wagyu Beef Skewer

¥ 1,700

Duck Skewer

¥ 1,400

※3

Duck salad

¥ 1,400

Assorted Sashimi

¥ 2,400

※4

Edamame

¥ 500

French Fries

¥ 600

Deserts

Gateau chocolat

¥ 850

This dessert is included in the course menu.

※5

Cassis sorbet

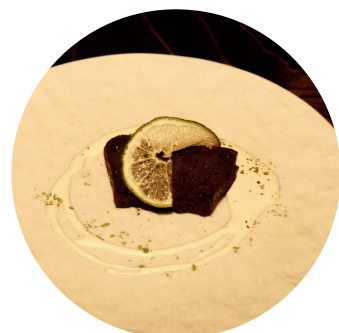
¥ 550

Dried persimmon pound cake

¥ 800

Gelato con coffee

¥ 650



※5